

# **EZCast Pro App 2.0**



**App for MacOS  
User's Manual**

Rev. 2.01

History:

<b>Revision</b>	<b>Change Note</b>	<b>Date</b>
<b>V2.01</b>	<b>New release for 2.0 app</b>	<b>2017/4/1</b>

# Introduction

Thank you for choosing the most powerful WiFi display app on the market, EZCast Pro. It's the most advanced WiFi Display app ever, and supports major Wireless display standards like Miracast, DLNA and AirPlay, Multimedia decoding, PDF/Office Viewer, Web browser, Real object projection (Live camera), as well as our advanced split screen control. It works with all EZCast Pro product family, and it will greatly enhance your media viewing experiences!

## App Installation

- Please download it from our official websites: [www.iezcast.com](http://www.iezcast.com) or [www.iezvu.com](http://www.iezvu.com)

\*Supports MacOS 10

\*Note: OS support may change along with future updates without prior notification.

## Getting Started



- Enter your Mac's WiFi setting, find the SSID, input the Password (PSK) and connect.
  - DEV means device's host name, you can change it in settings later.
- Open EZCast Pro app on your device. Once you've connected to EZCast Pro

hardware, the on-screen link status will be updated and show how many devices are linking to it directly.

- If there is any new FW available, the update icon will be shown on device.
- Miracode is a shortcut to link via direct IP. It can be turned off in administrator mode.
- The main screen may change based on different connecting methods (direct or via router).
- There may be another 4 digit CastCode, which controls the permission for specific users to cast content.

Important: WiFi Link mode explained

- EZCast Pro devices can be connected through various methods, such as:
- SoftAP mode: It directly links a PC/Mobile Phone/Tablet to a Pro device. It can be done by discovering the EZCast Pro's SSID, or by setting up the EZCast Pro to a shared WiFi network with your router.

\*Note: After setting up your internet, sometimes the connection between EZCast Pro and your mobile phone might be disconnected, because of different WiFi router channels. Please reconnect.

- Infrastructure mode: The link to EZCast Pro is performed through a router instead of SoftAP mode. However, the performance may not as good as a direct link.
- There are 2 special modes for WiFi connections in our advanced setting, one is "Direct Link Only" and the other is "Via Router Only".
- In "Direct Link Only" mode, you will not be able to discover EZCast Pro through a router. In "Via Router Only" mode, the Pro device will shut down its SoftAP (SSID) so no one can search or link it directly. This mode is useful if suspecting a possible direct hacker attack. You will need to connect the device through router in this setting.



Direct Link: This provides the best bandwidth between your smart devices/PC and EZCast Pro.



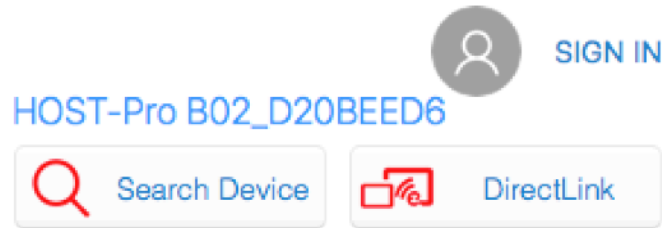
Via Router Allowed: You will be able to discover EZCast Pro through home router if you have established the connection with router.



Via Router Only: In this mode, the SoftAP of 2.4Ghz/5Ghz WiFi will be turned off, to prevent a direct link to EZCast Pro.

# Starting the App

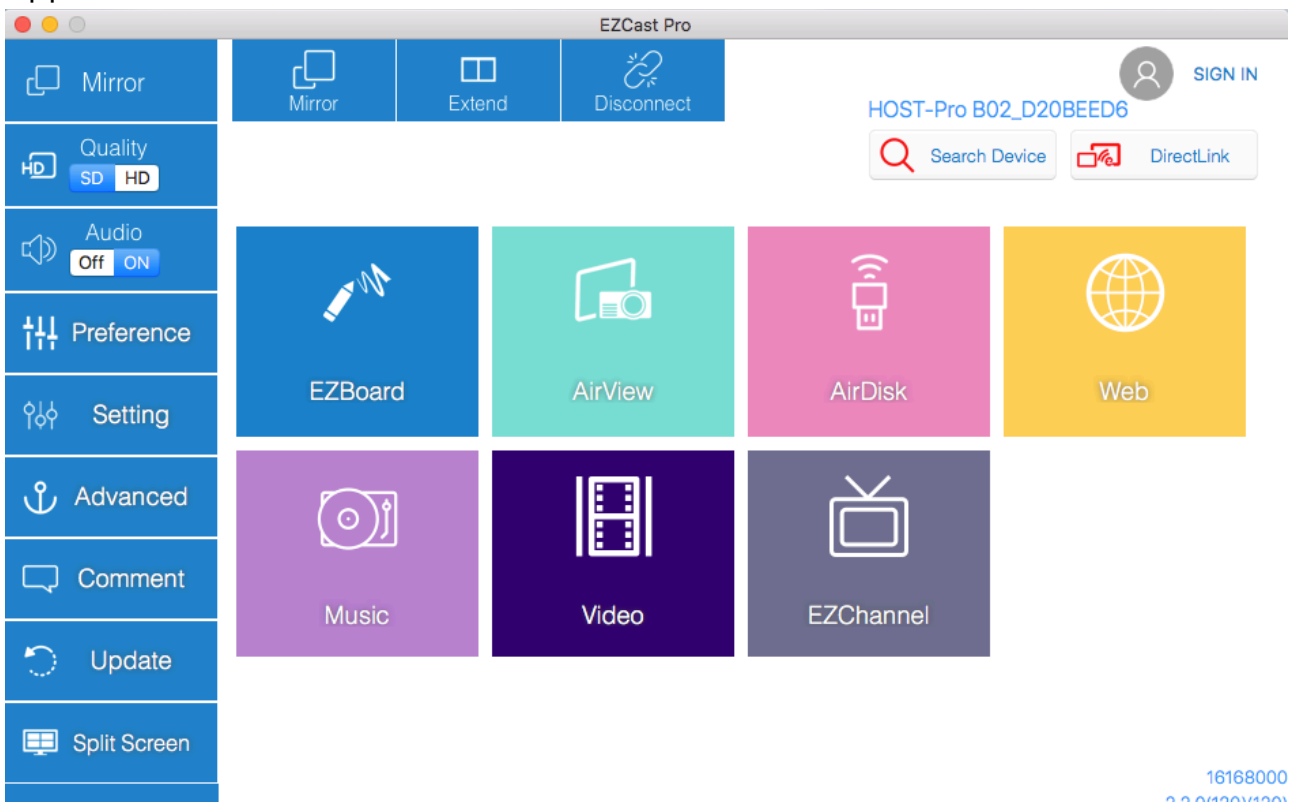
- If you haven't connected to WiFi prior to opening the app, please make sure you have connected to a Pro device or connected to the same network.
- If you didn't select a Pro device while the app starts, you can link it later by using "search device" or "Direct Link" and input IP/Miracode/Name.



# App Tips

- You can cast your multimedia data wirelessly now, however, features like cloud storage and web browsing will require internet connection.
- Please be noted EZMirror (Miracast) mode disconnects device from WiFi, and you will need to connect to internet through your phone (3G or WiFi) if you want to continue surfing the internet.

# App Features



- Mirror
  - You can "Mirror" the screen on your device or "Extend" it in the Mirror function.

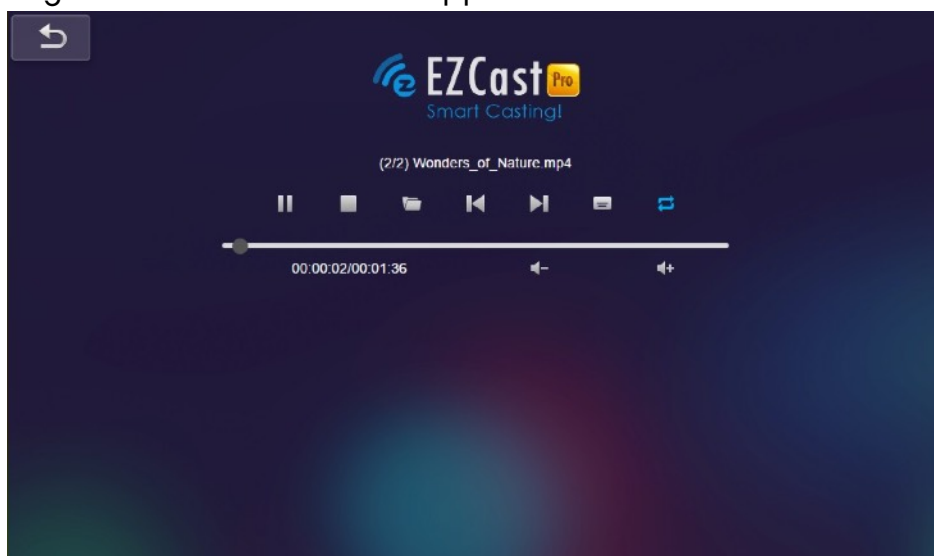


- Quality and Audio



You can change the video quality and turn on/off the audio. Please be noted mirroring high quality images may result in lower frame rate due to higher bandwidth consumption.

- Video
  - By using Video function, you can cast your video files to Pro device and enjoy full screen video playback.
  - You can control the video playback such as volume and fast forward through the control bar in the app.

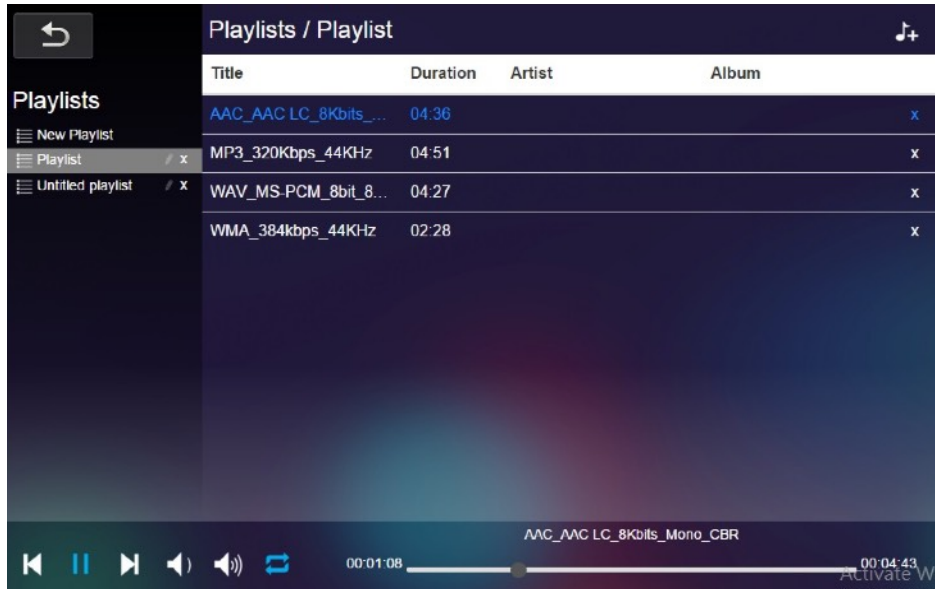


- You can also sync subtitle files to videos. Just make sure the filename is the same as the video, it will be automatically shown during playback.

\*For subtitle formats, we support srt, smi, ssa and cdg formats with UTF-8 coding.

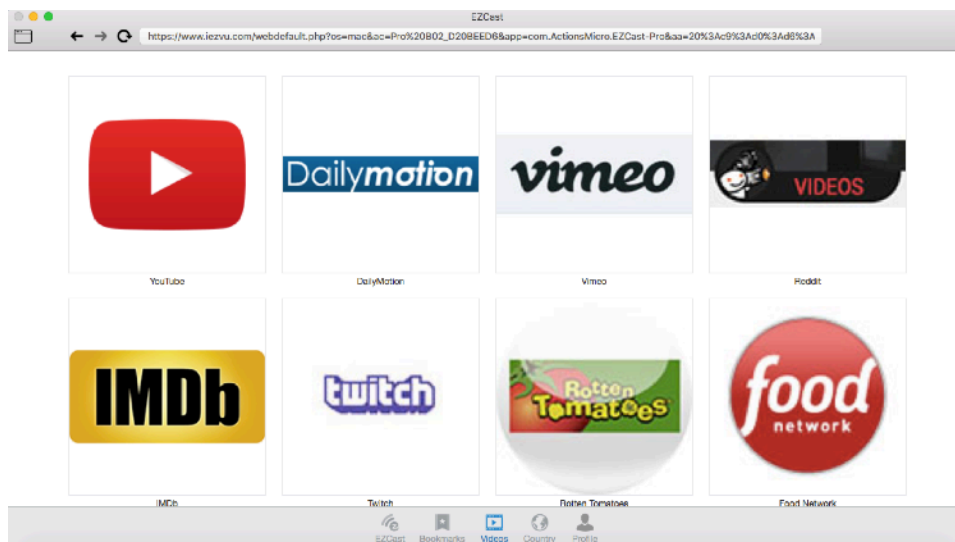
- Music

- The music player allows you to stream music through WiFi, and we also support playlists.



- Web

- EZCast Pro comes with a built-in browser, and we also bookmarked several popular websites to get you started.
- The web pages will dynamically change with different country settings on your device.



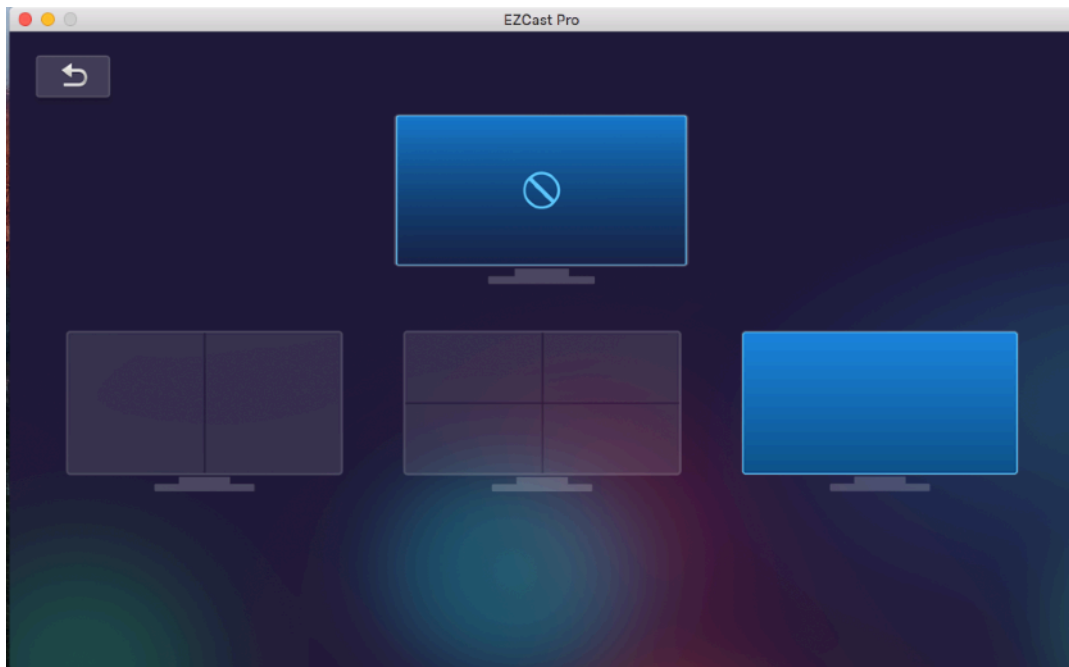
- Comment

- We treasure your feedback, both good and bad, so we created an innovative way to communicate with you. You can send comments,

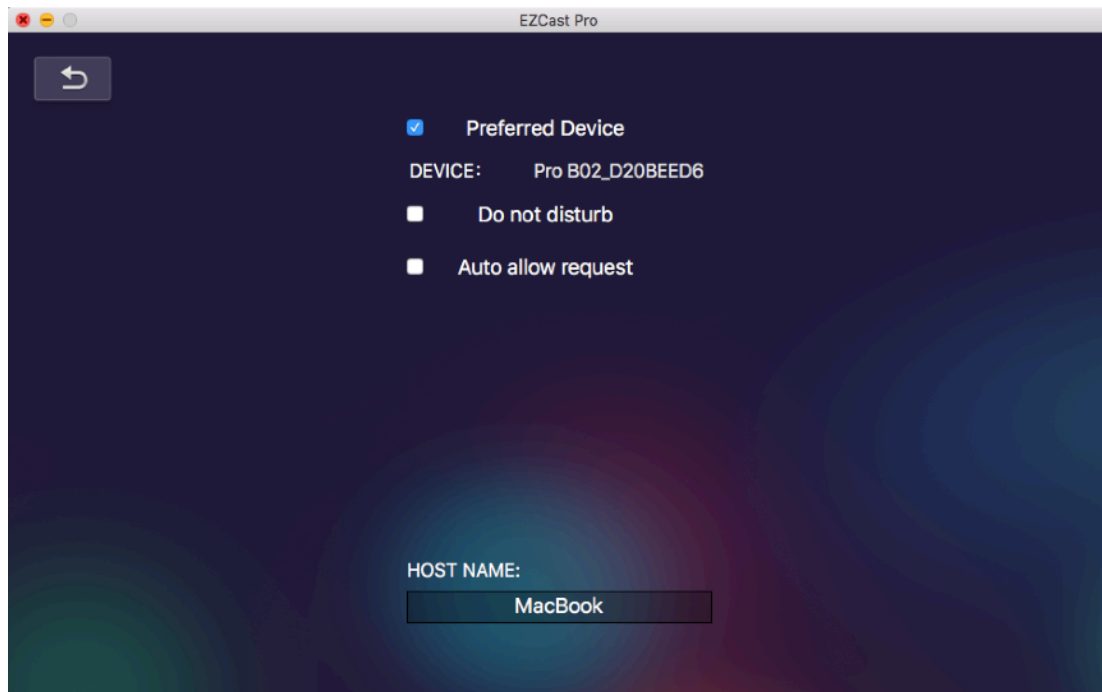


suggestions or even bug reports to us directly, and contribute to future product improvements.

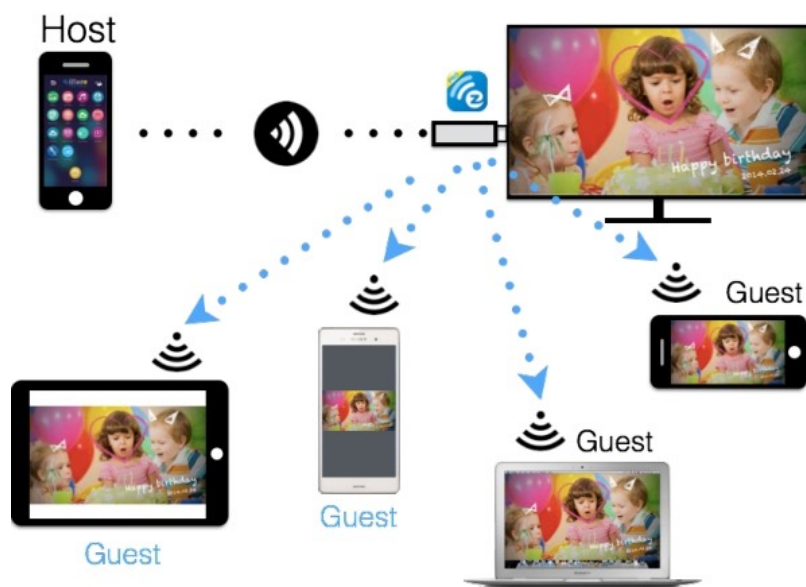
- Split Screen and Host Control



- When you are the first user linked to EZCast Pro and open the app, you will become the “Host”.
  - Host has the authority to control the display, and can use all features without restriction. The latecomers will be treated as “Guest”, with limited functionality, and requires Host’s permission to display.
  - EZCast Pro device allows maximum of 4 users to display on screen together, but only Host can decide the position he wants, while other guests’ screens will be placed automatically after permission is granted.
- Preferences
    - Change Preferred device settings, and enable/disable the inquiry from guests (Do Not Disturb), or allow all display requests from guests (Automatically allow requests).
    - Set the current device as a “Preferred device” to link directly without manual selection.



- AirView



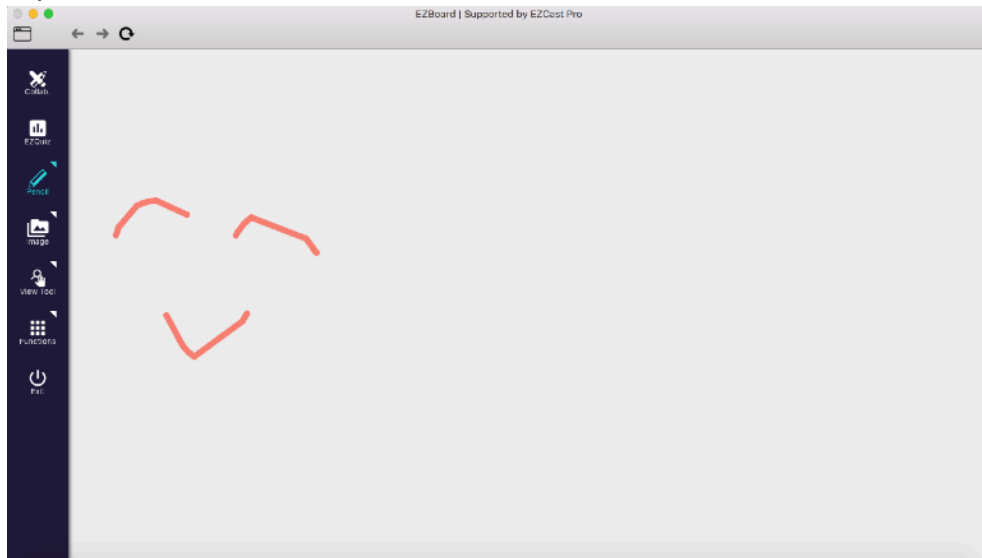
- Enable AirView function to see the current display content on EZCast Pro. This is a great tool for sharing content.
- This function does not need Host's permission to enable.

\*This feature doesn't support video or audio streaming.

- EZBoard

- EZBoard is an innovative function to facilitate true collaboration, by allowing all users to collaborate on the same board. It supports sketches, photos and texts. All users can see the results in realtime, either on Pro or their own devices. Furthermore, we also integrated a quick tool for quiz

purposes.

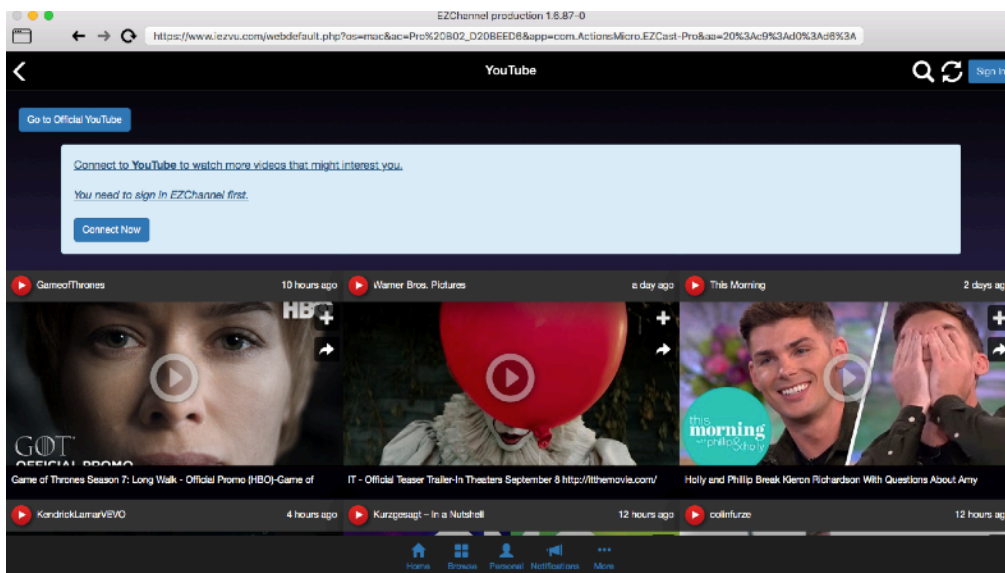


\*Please be noted EZBoard requires internet connection.

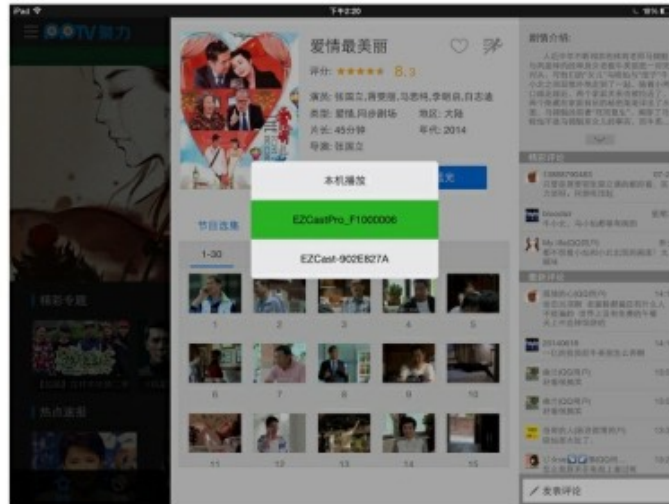
- EZChannel

- Upon entering EZChannel, you can enjoy default featured channels, public channels or your friends' channels. Some features require logging in.
- You can subscribe channels here, review your playlists (collections) or install Chrome plug-ins in the settings.

\*Please be noted this function requires internet connection.



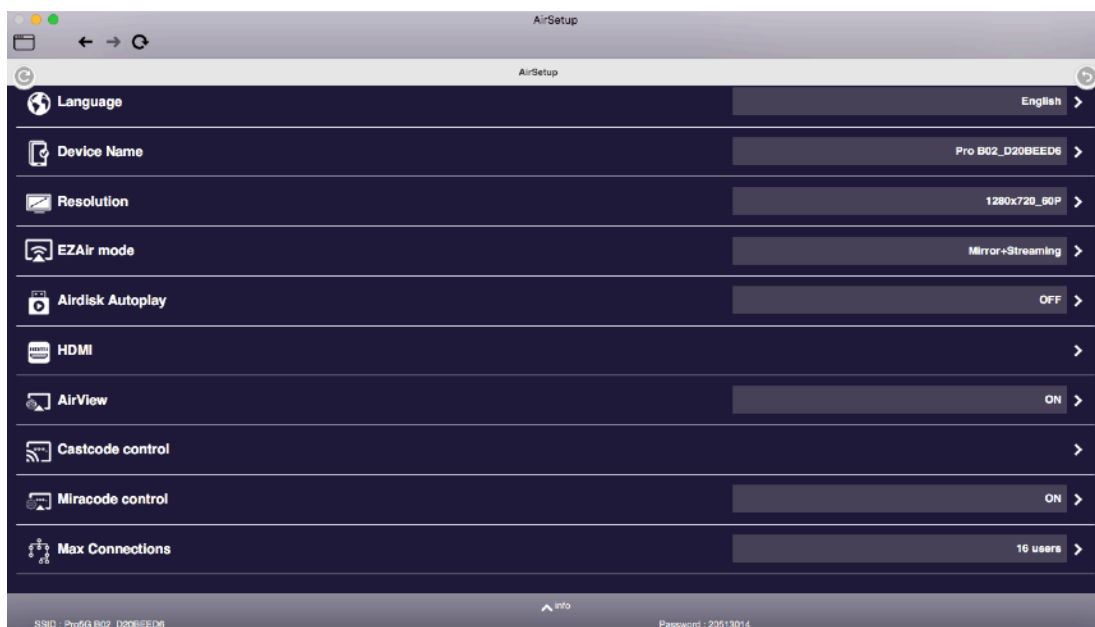
- DLNA DMR



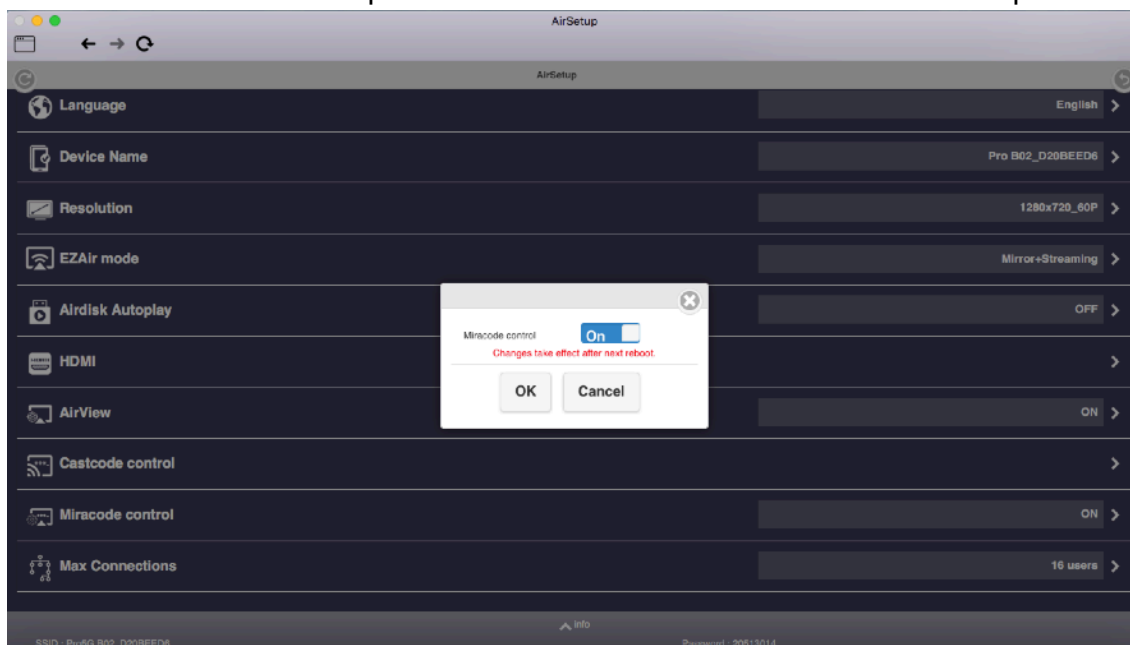
- DLNA is an industry standard that allows you to stream multimedia formats through WiFi/LAN.
- In the main menu, you can also use DMLA app to push multimedia files to EZCast Pro for streaming.

- Settings

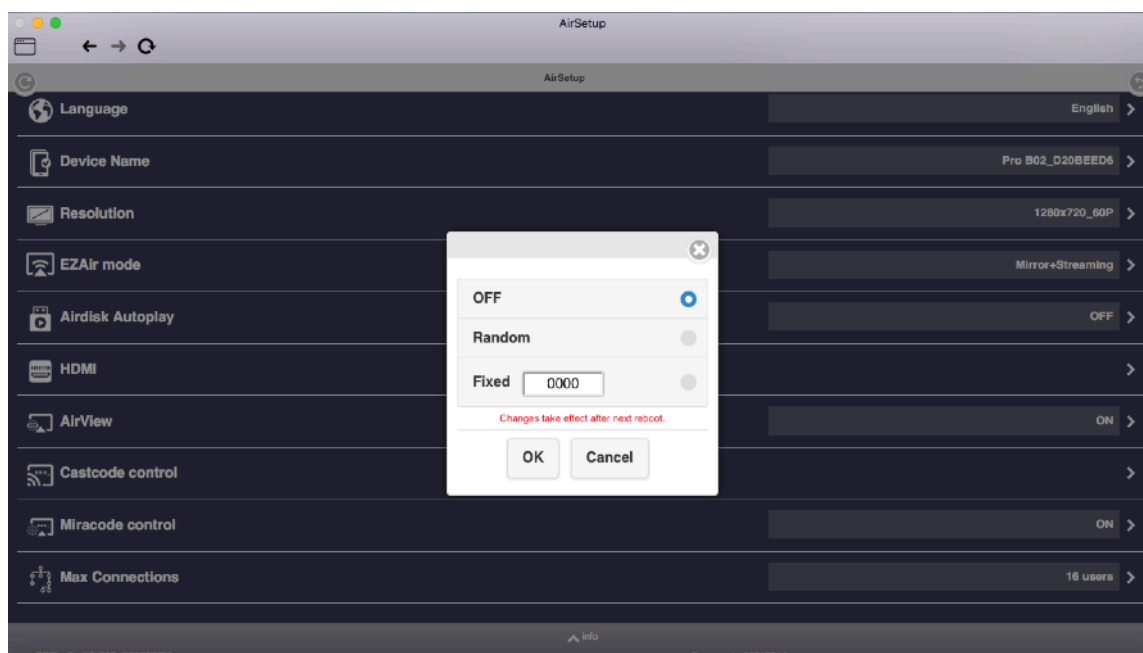
- You can setup EZCastPro device's configurations including output resolution, change SSID password, setup router connection for internet surfing, languages, EZAir modes, and turn on/off Airview/Castcode/Miracode...etc.



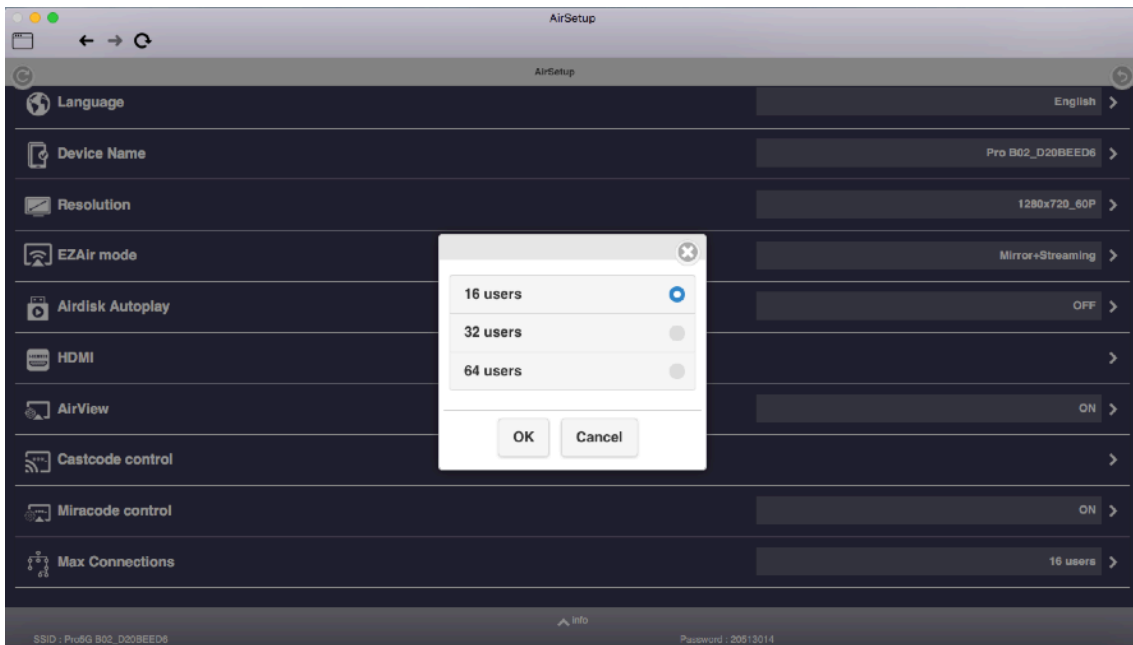
- Miracode: this is a special code for IP translation for better IP protection.



- Castcode: The admin can turn on Castcode for guests, where they can cast their contents by inputting the 4 digit Castcode. This can prevent interruptions by users not in the same conference room.



- Max Connections: Host/administrator can define the maximum SoftAP connections from 16~64.

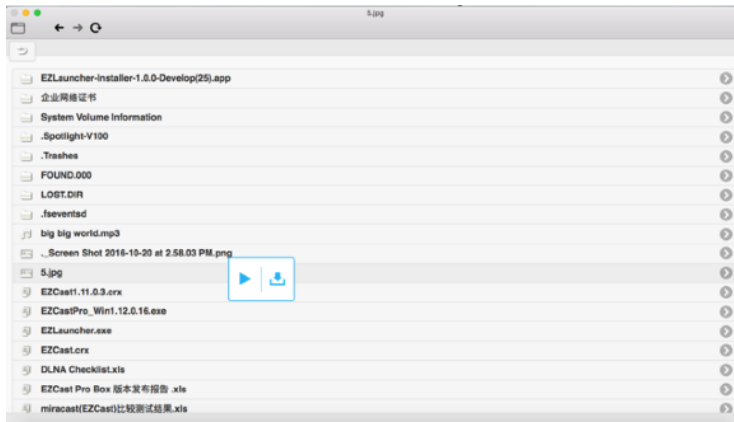


- AirDisk

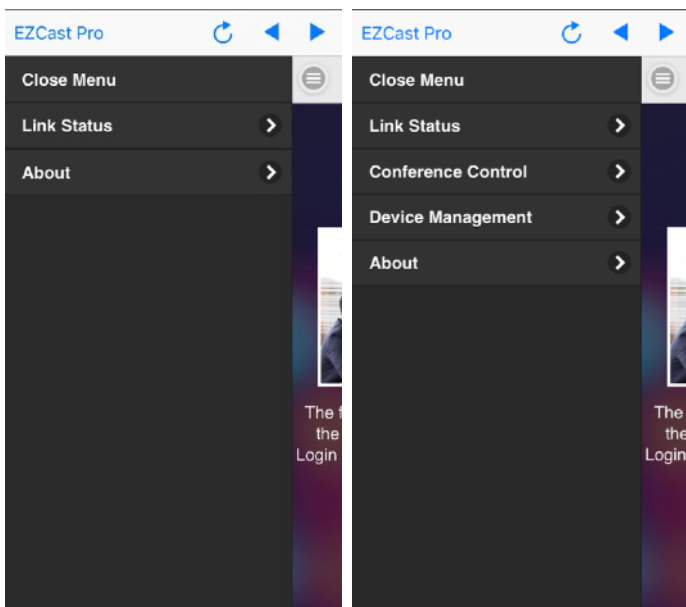


- AirDisk allows you to play the content on a USB disk connected to Pro Box's USB port.

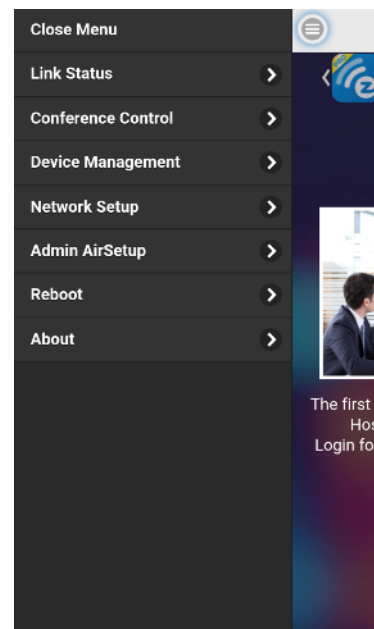
\*Pro Box can supply up to 500mA to the USB port.



- Advanced



Example: Non-admin mode (Guest/Host)



Example: Administrator mode



- The Advanced function contains all advanced settings/controls, including

Conference Control, Device Management, Network setup, Admin Setup, Host Authority control, Add CA and Access Control or Reboot and Upgrade FW...etc. The default password is “000000”, and you have to change it after logging in as admin for the first time.

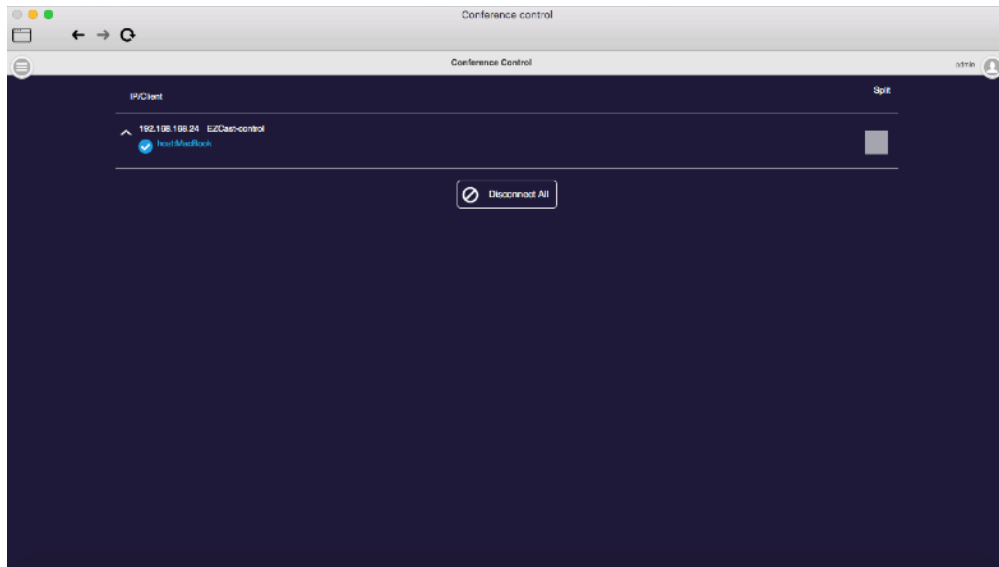
**\*Important!!!! Please be careful and keep the new password safe, if you forget the password, the only way to reset it is to contact us for help.**

- **Link Status**

- ◆ You can check all connected devices' status here.

- **Conference Control (Default for Host/Admin only)**

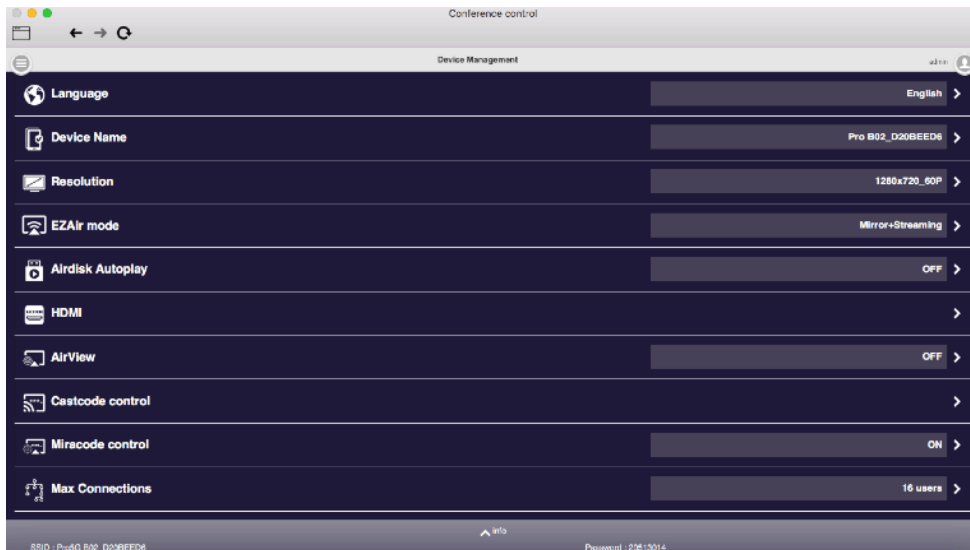
- ◆ Select a position to display content.
- ◆ Disconnect all devices.
- ◆ **Miracast cannot be controlled in this interface.**



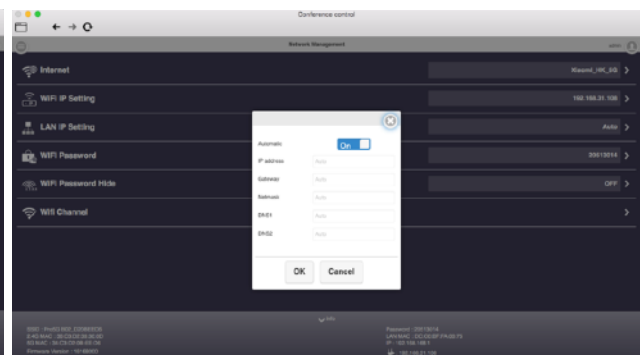
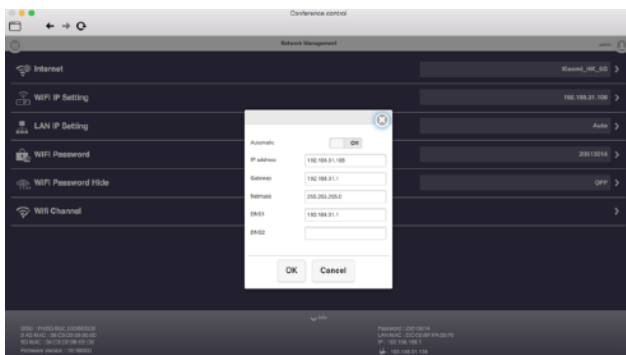
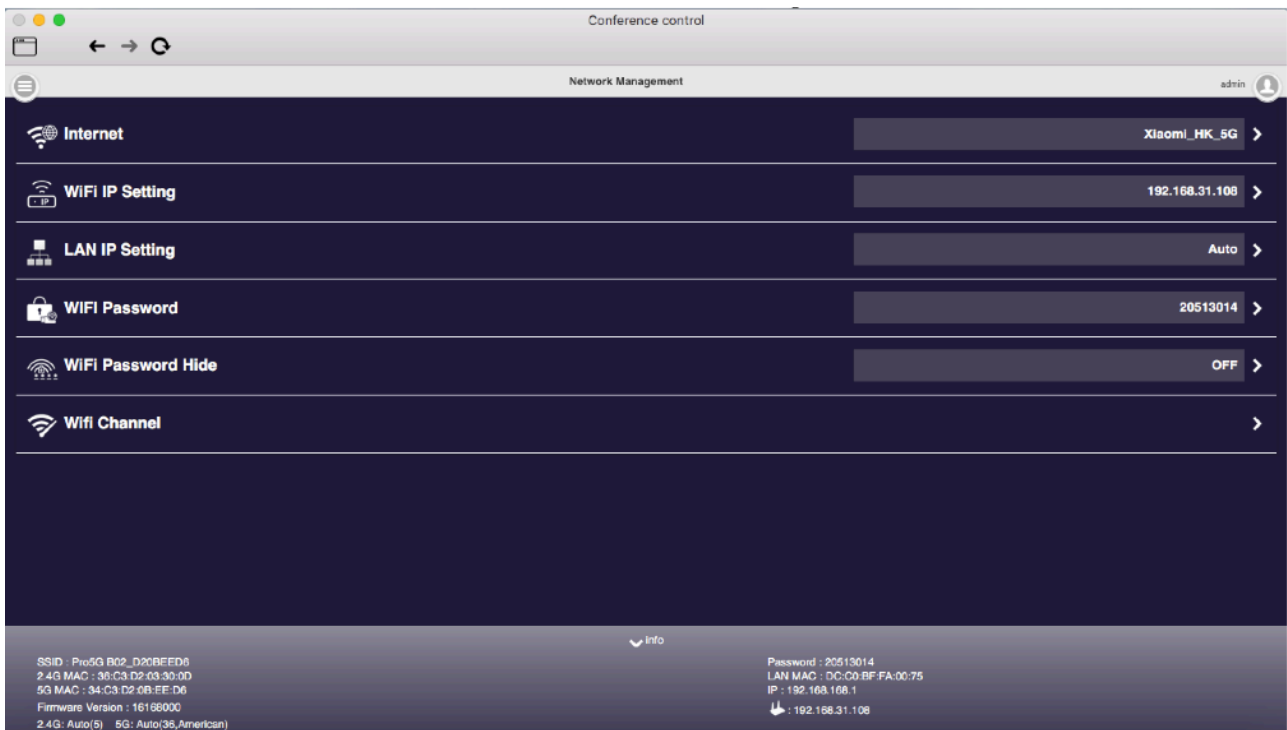
- **Device Management (Default for Host/Admin only)**

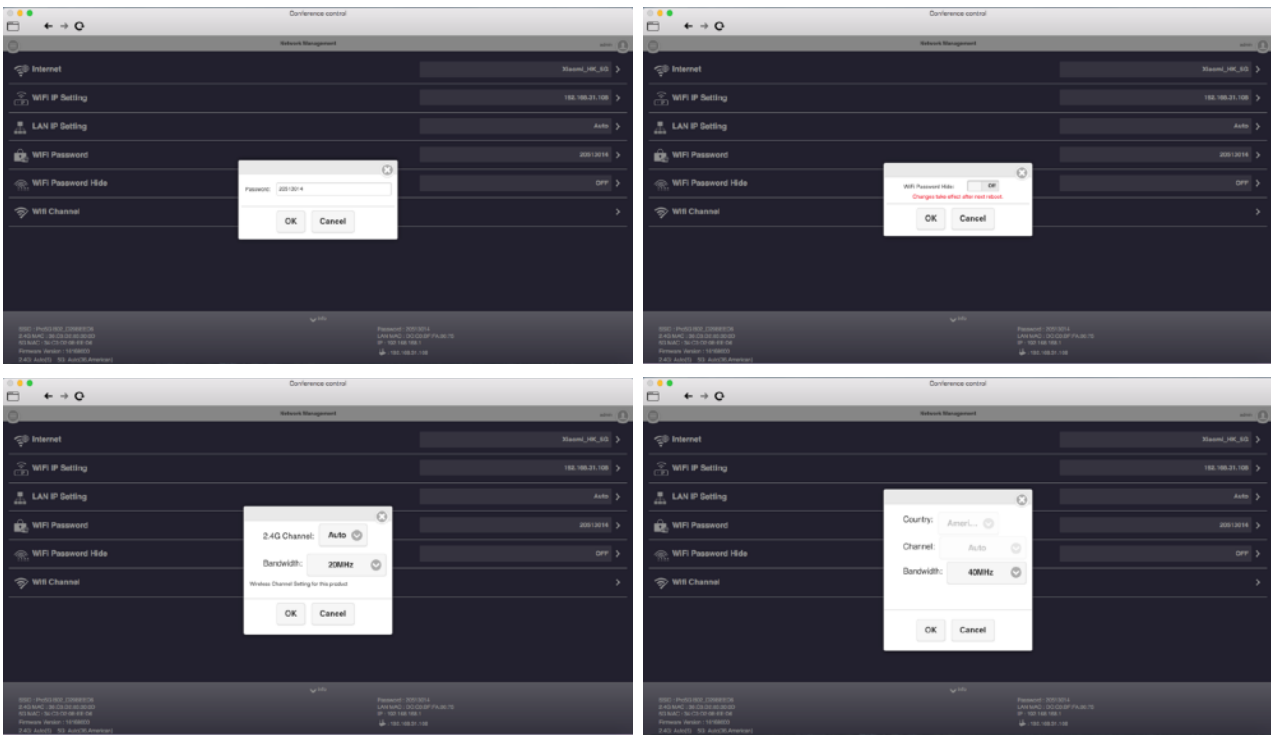
- ◆ Modify device settings here, including language, device's host name(not SSID), change resolution, change to EZAir mode during video playback (only mirror or stream video), turn on/off AirDisk auto play, HDMI CEC, AirView on/off, Castcode on/off/fixed digits, Miracode on/off, as well as the maximum number of connected users.





- **Network Setup (Default for Admin, but can be enabled for Host by Admin)**
  - ◆ Adjust network related settings. Please be noted some settings will require reboot.





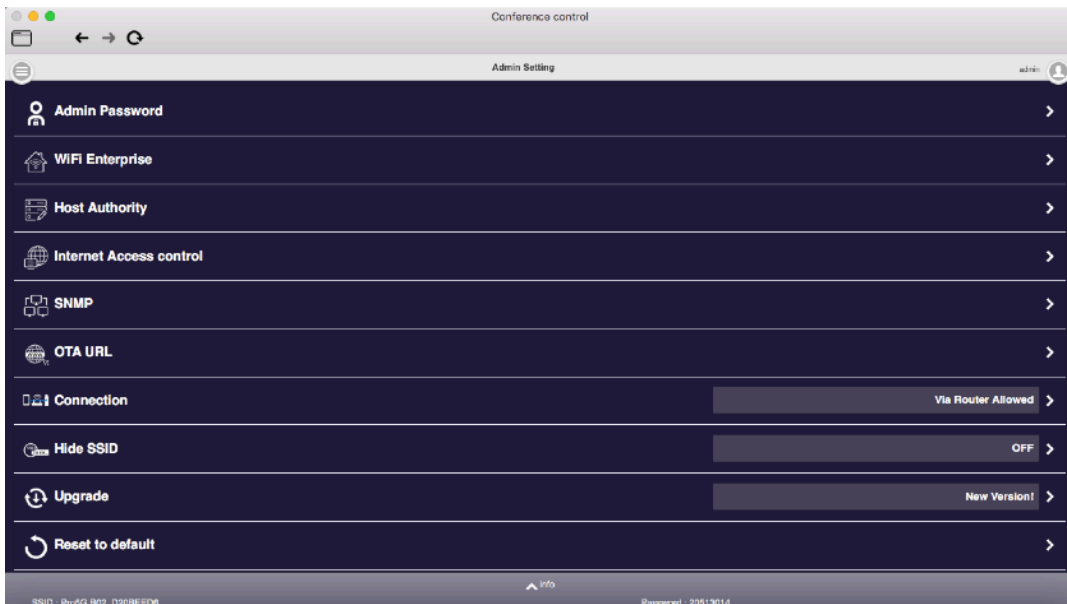
- **Admin Setup (Only for Admin)**

- ◆ Admin related functions such as releasing some authorities to Host to control the device.

- Password

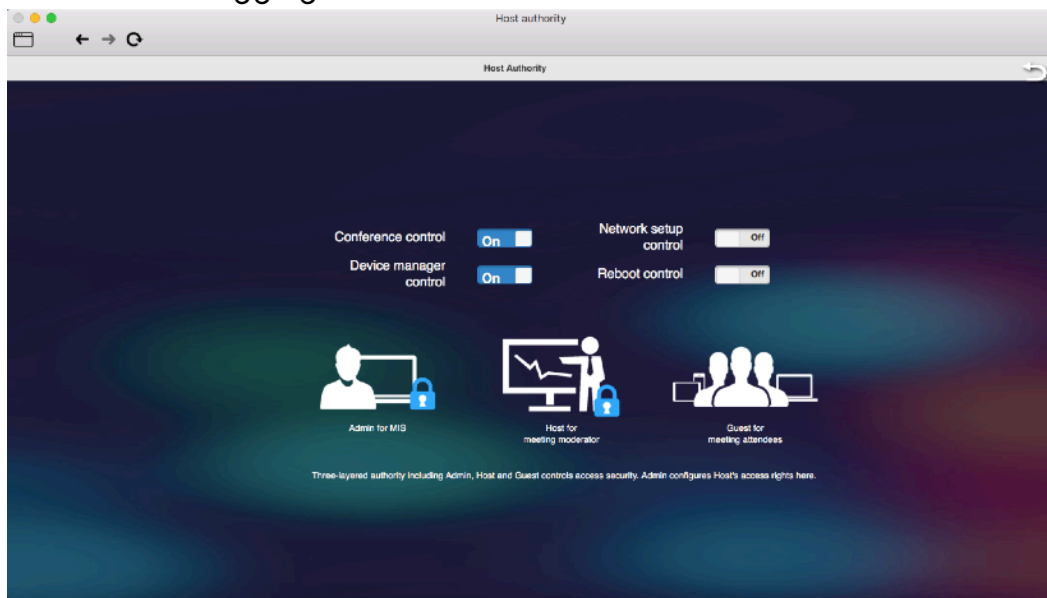
- ◆ Change Admin password. The default password is “000000”, and you have to change it after logging in as admin for the first time.

*\*Please remember the Administrator password. If you forget it or lose it, the only way to unlock the device is to contact us to reset.*



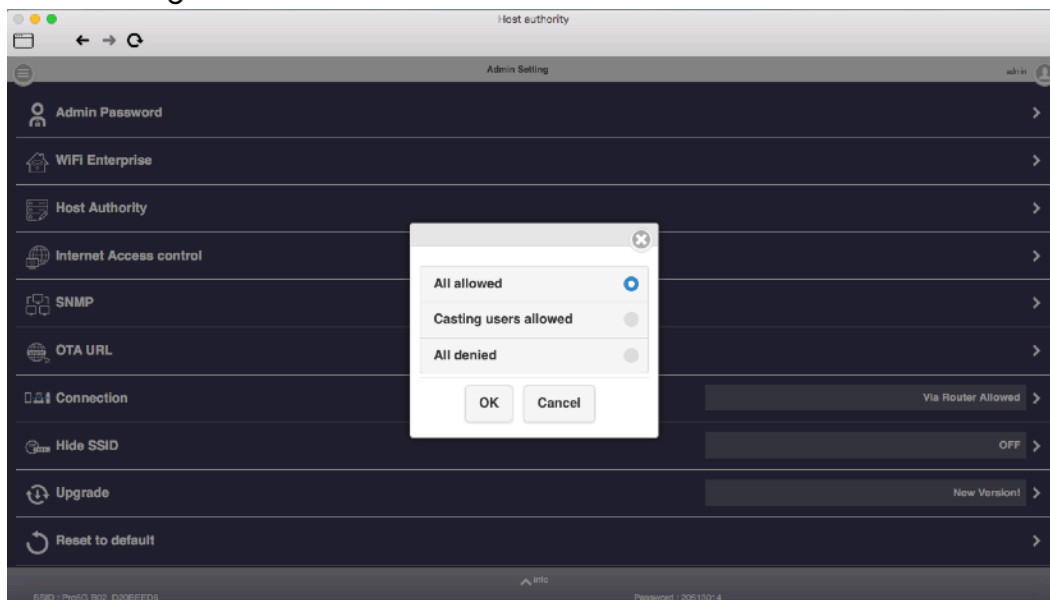
- Host Authority

- ◆ The Admin can empower the Host to use some Admin functions without logging in as an Administrator.

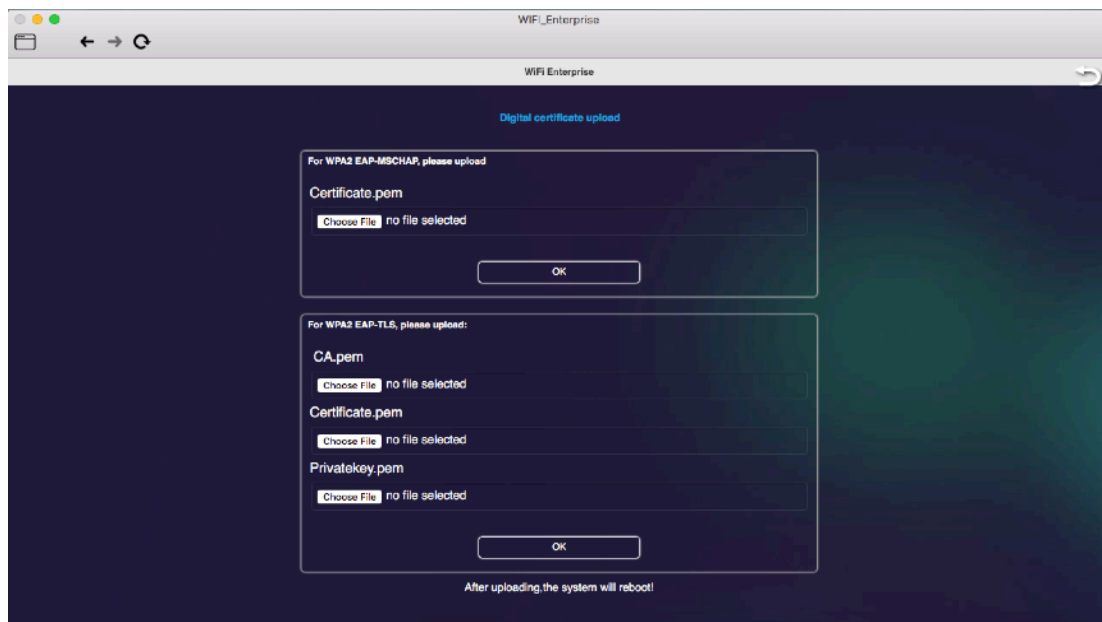


- Access Control

- ◆ The Admin can decide if the connected devices can access internet through EZCast Pro device or not.



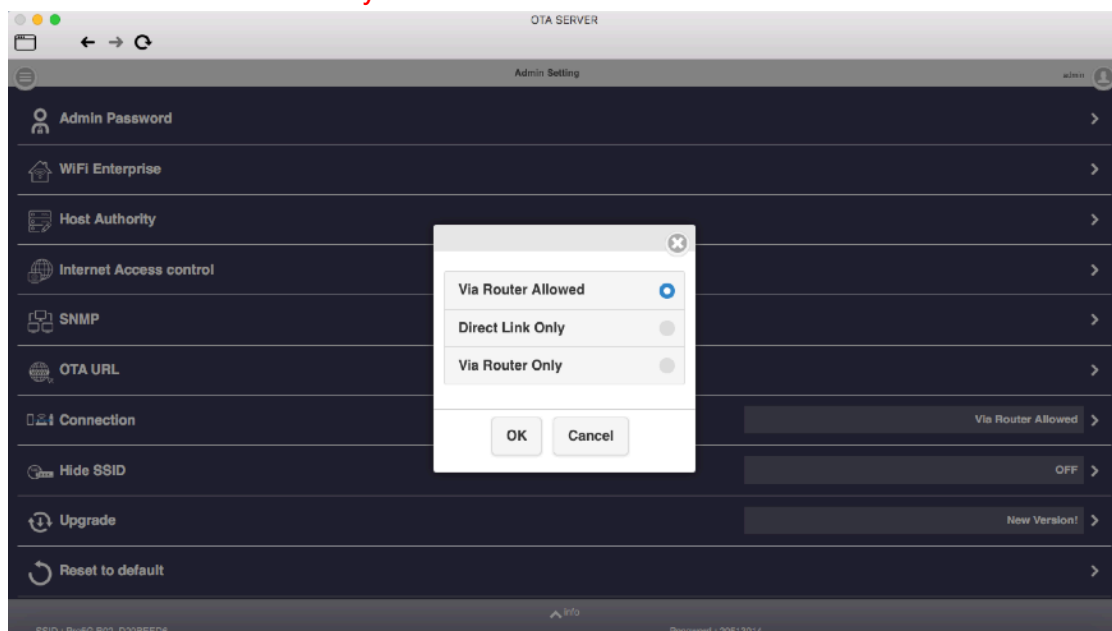
- Add CA for WiFi enterprise (802.1x) connection. Consult with your MIS for the CA if needed.



- Connection

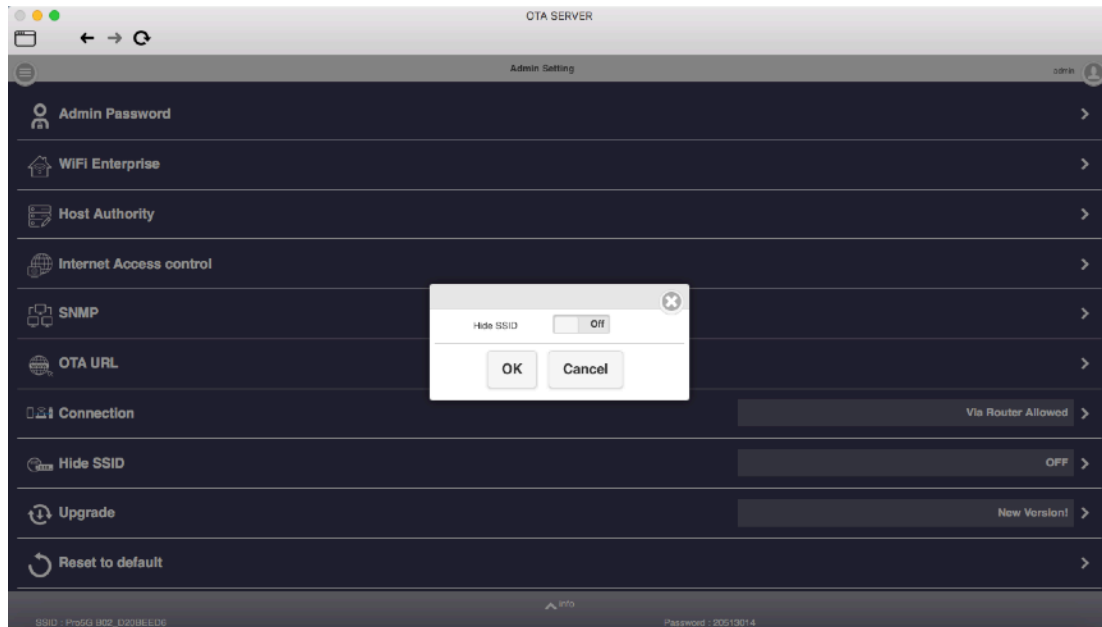
- ◆ There are 3 ways to link to a Pro device; you can restrict the Pro device to be connected by Direct Link Only (can't be discovered through router or other subnet), Via Router Only (the direct like will be disabled), or Via Router Allowed (can be discovered by direct WiFi link or through router).

**\*Please be careful while using “Via Router Only” and “Direct Link Only” modes because they will turn off the other modes.**

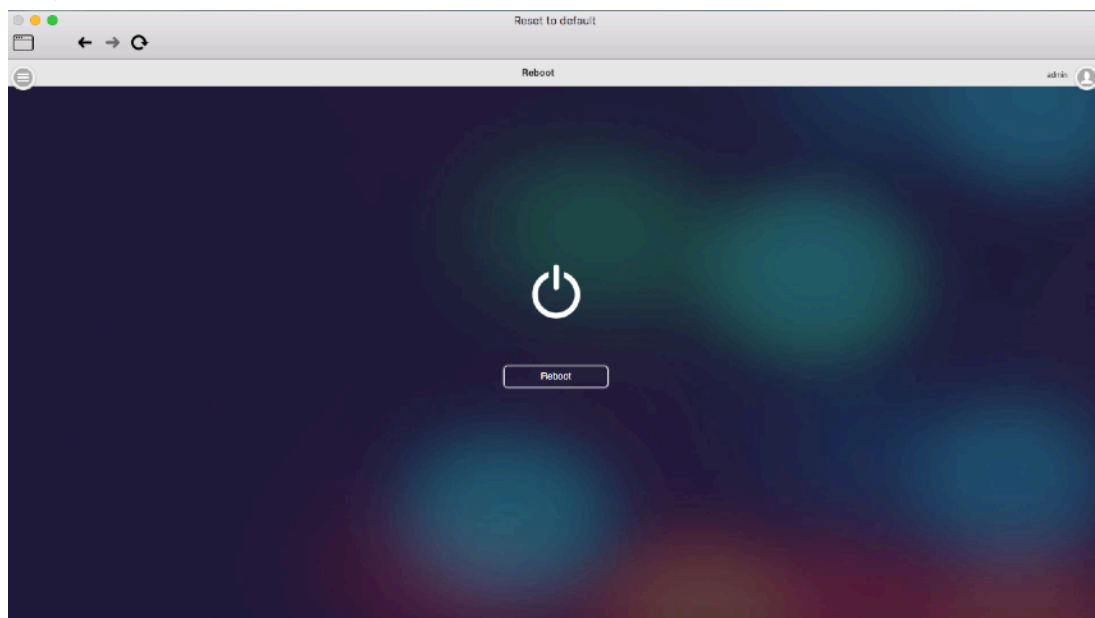


- Hide SSID

- ◆ Under some circumstances, you may need to disable SSID to prevent unwanted connections.



- Reboot Control (Default for Admin only, but can be released to Host)
  - ◆ Reboot the device.



- Reset to Default
  - ◆ Reset all parameters to default.

©2014 Actions Microelectronics Co., Ltd. All rights reserved. EZCast, and EZCast Pro are trademarks of Actions Microelectronic Co., Ltd., registered in China and other countries. Other products and company names mentioned herein may be trademarks of other respective companies.

## FCC STATEMENT

1. This device complies with Part 15 of the FCC Rules. Operation is subject to the following two conditions:

(1) This device may not cause harmful interference.

(2) This device must accept any interference received, including interference that may cause undesired operation.

2. Changes or modifications not expressly approved by the party responsible for compliance could void the user's authority to operate the equipment.

NOTE: This equipment has been tested and found to comply with the limits for a Class B digital device, pursuant to Part 15 of the FCC Rules. These limits are designed to provide reasonable protection against harmful interference in a residential installation.

This equipment generates uses and can radiate radio frequency energy and, if not installed and used in accordance with the instructions, may cause harmful interference to radio communications. However, there is no guarantee that interference will not occur in a particular installation. If this equipment does cause harmful interference to radio or television reception, which can be determined by turning the equipment off and on, the user is encouraged to try to correct the interference by one or more of the following measures:

Reorient or relocate the receiving antenna.

Increase the separation between the equipment and receiver.

Connect the equipment into an outlet on a circuit different from that to which the receiver is connected.

Consult the dealer or an experienced radio/TV technician for help.

## FCC Radiation Exposure Statement

This equipment complies with FCC radiation exposure limits set forth for an uncontrolled environment. This equipment should be installed and operated with minimum distance 20cm between the radiator & your body

本產品符合國家通訊傳播委員會(NCC)之規範：

低功率電波輻射性電機管理辦法

第十二條 經型式認證合格之低功率射頻電機，非經許可，公司、商號或使用者均不得擅自變更頻率、加大功率或變更原設計之特性及功能。

第十四條 低功率射頻電機之使用不得影響飛航安全及干擾合法通信；經發現有干擾現象時，應改善至無干擾時方得繼續使用。前項合法通信，指依電信法規定作業之無線電通信。

低功率射頻電機須忍受合法通信或工業、科學及醫療用電波輻射性電機設備之干擾。

\* 您可以在官網下載到最新版完整手冊以及相關品問題：[www.iezvu.com](http://www.iezvu.com)或  
[www.iezcast.com](http://www.iezcast.com)

©2014 Actions Microelectronics Co., Ltd. : EZCast與EZCast Pro為Actions Microelectronic Co., Ltd., 炬力北方微電子有限公司在大陸地區與其他國家註冊之商標，說明書中提到的相關產品名稱或商標則屬於相對應之該公司所有。